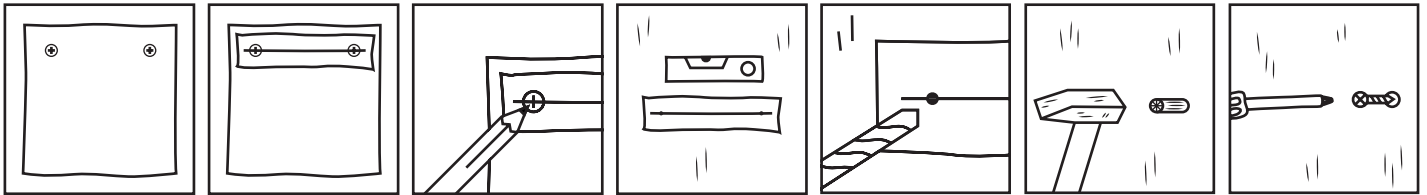
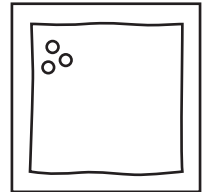


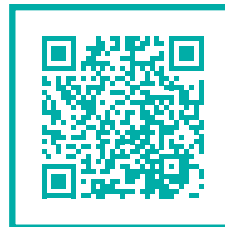
The board is supplied inclusive screws, plugs and drilling template.



1. There is metal on the back of the board. The metal back is prepared with holes.
2. Attach the adhesive drill template on the top of the holes on the back.
3. Mark with a pen on the line in the center of each hole.
4. Attach the adhesive drill template on the wall, use a spirit level to insure the line is placed completely horizontal.
5. Drill two holes through the template.
6. Put the plugs into the holes.
7. Screw in the screws.

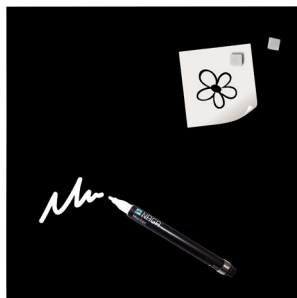


8. Hang the glass board on the screws. Your glass board is ready for use.



Watch video!  
Scan QR-code and see our instruction video for easy mounting of the board.

**Super Strong**



The board is delivered in a gift box with one marker and two Super Strong Magnets. The marker will be in black or white depending on the color of the board.



Please note that you can only use Super Strong magnets on your glass board. The magnet has to attach to the metal through the glass.

## Using a NAGA Chalk marker

Dry erase

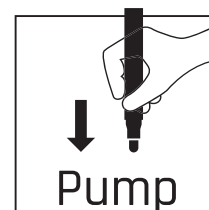
Based on liquid chalk.  
Easy to wipe off, when it is dry.

Use dry cloth or board eraser.

Quick instruction for use:

1. Shake well with cap on.
2. Pump untill nib fills with ink.
3. Write or draw.

After use, replace cap tightly and store horizontally.



Watch video!  
Scan QR-code and see our instruction how to use of NAGA marker.

